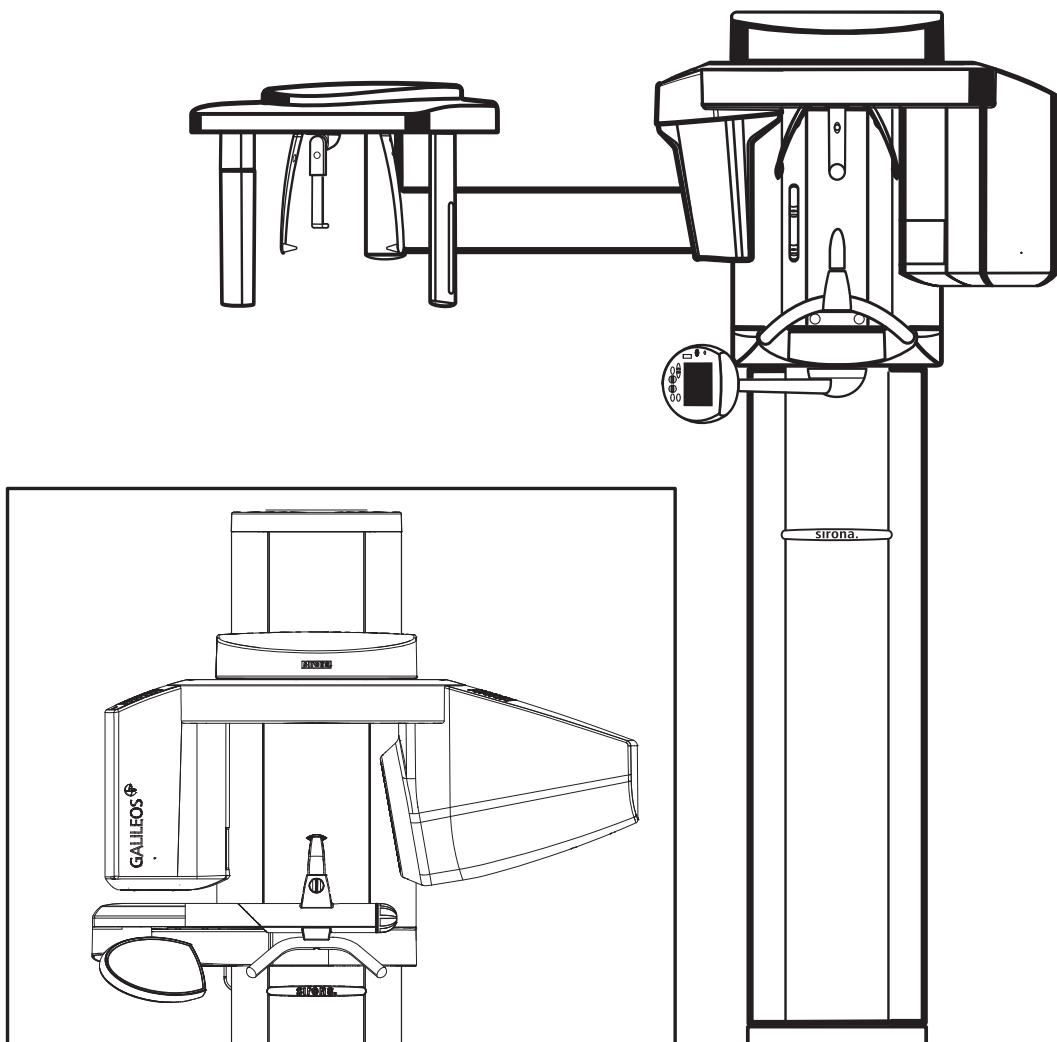


GALILEOS[®] ORTHOPHOS XG 3D

Software installation

English



Contents

1	Overview	4
1.1	Scope of supply.....	4
1.2	What is the Sirona Reconstruction Server (RCU)?	4
1.3	What is a visualization PC?.....	4
2	Network connection.....	6
3	Installing the Sirona Reconstruction Server	7
3.1	Setting the time zone and time on the Sirona Reconstruction Server.....	7
3.2	SIDEXIS XG client installation	7
3.3	Starting the Sirona Reconstruction Server CD.....	7
3.4	Installation selection.....	8
3.5	Installation Wizard	10
3.5.1	Starting the installation.....	10
3.5.2	Setting an installation directory for the Sirona Control Server	10
3.5.3	Configuration of the Sirona Control Server	11
3.5.4	Starting the installation.....	12
3.5.5	Finishing the installation.....	12
4	GALILEOS.....	14
4.1	Installation of a visualization PC	14
4.1.1	Prerequisites	14
4.1.2	SIDEXIS XG client installation	14
4.1.3	Starting the GALILEOS workstation CD.....	14
4.1.4	Starting the installation.....	15
5	ORTHOPHOS XG 3D	17
5.1	Installation of a visualization PC	17
5.1.1	Prerequisites	17
5.1.2	SIDEXIS XG client installation	17
5.1.3	Starting the ORTHOPHOS XG 3D workstation CD	17
5.1.4	Starting the installation.....	18
6	Installation and initial startup of the 3D X-ray unit.....	20
7	Licensing	21

7.1	Factory setting	21
7.2	License management	21
7.2.1	Installing the license file	22
7.2.1.1	Storing the license file	22
7.2.1.2	Installation	22
7.2.2	Purchasing new licenses	23

1 Overview

1.1 Scope of supply

- GALILEOS
- The GALILEOS software installation program can be found on the GALILEOS CD. In addition to the GALILEOS installation software, this CD also contains other tools which can be installed using the selection program on the CD.
- ORTHOPHOS XG 3D
- The ORTHOPHOS XG 3D software installation program can be found on the ORTHOPHOS XG 3D workstation CD. In addition to the GALILEOS installation software, this CD also contains other tools which can be installed using the selection program on the CD.
- The Sirona Reconstruction Server software installation program can be found on the Sirona Reconstruction Server CD.

1.2 What is the Sirona Reconstruction Server (RCU)?

Explanation

This document repeatedly uses the term Sirona Reconstruction Server or RCU.

RCU is the abbreviated name of "Reconstruction Control Unit."

The 3D X-ray system consists of the 3D X-ray unit and the Sirona Reconstruction Server (RCU).

The Sirona Reconstruction Server (RCU) is a PC specially designed for operating a 3D X-ray unit with an English operating system and English keyboard.

Tasks

The Sirona Reconstruction Server (RCU) has the following tasks:

- License management
- Calculation of the 3D volume from the individual exposures of the 3D X-ray unit.
- Transfer of the 3D volume to the SIDEXIS database.
- Rescue control

Installation

Various computer programs need to be installed on the Sirona Reconstruction Server (RCU) in order to perform the tasks assigned to the Sirona Reconstruction Server (RCU).

This document describes how to install the Sirona Reconstruction Server (RCU).

1.3 What is a visualization PC?

Explanation

This document repeatedly uses the term visualization PC.

The visualization PC is a SIDEXIS workstation (client installation), which was supplemented for creating and editing 3D exposures.

Tasks

The visualization PC has the following tasks:

- License management
- X-ray exposure requests from the 3D X-ray unit.
- Administration of 3D volume data in the SIDEXIS database.
- Diagnosis, editing and recalculation of the 3D volume data, using the "GALAXIS" program.

Installation

Various computer programs have to be installed for the tasks of the visualization PC.

This document describes how to install these programs.

2 Network connection

After the X-ray unit has been set up in accordance with the installation instructions, the X-ray unit and the associated Sirona Reconstruction Server (RCU) must be connected to the network.

Prerequisites

- The prerequisites described in the installation requirements are fully met.
- The X-ray unit has been installed according to the installation instructions.
- The installer has administrator rights.

Hardware connection

1. Connect the X-ray unit with the SIDEXIS network via the media converter.
2. Connect the Sirona Reconstruction Server (RCU) with the SIDEXIS network.

Assignment of rights

- Assign the necessary user rights for the future users of the system in the network.

3 Installing the Sirona Reconstruction Server

3.1 Setting the time zone and time on the Sirona Reconstruction Server

Settings

- ✓ The Sirona Reconstruction Server has been unpacked and the necessary connections (keyboard, mouse, monitor, and network) have been established.
- ✓ The included dongle has been inserted into a free USB port.
 1. Switch on the Sirona Reconstruction Server.
 2. Set the Sirona Reconstruction Server to the right time zone and time.

3.2 SIDEXIS XG client installation

Explanation

Prior to the actual installation, a SIDEXIS XG client has to be installed on the Sirona Reconstruction Server and the visualization PC.

Prerequisite

- A SIDEXIS network already exists and the SIDEXIS database server and SIDEXIS XG master station are installed (see SIDEXIS installation instructions).

CAUTION

Possible system operating problems

The SIDEXIS database server and the SIDEXIS XG master station may **not** be installed on the RCU!

Installation

The installation of the SIDEXIS XG client is described in the SIDEXIS installation instructions.

3.3 Starting the Sirona Reconstruction Server CD

Important information

The following should be noted prior to installation:

- The login of multiple users is not permissible.
- The user who performs the installation must have administrator rights.
- Any other programs which may be running must be closed.

Starting the installation

The Sirona Reconstruction Server CD usually starts automatically after it is inserted in the drive. If this is not the case, you can start the setup routine manually by executing the Autorun.exe file in the root directory of the CD.



Installation language

The installation program checks the language version of the installed operating system and automatically switches to one of the possible installation languages. This does not necessarily have to be the language in which the SIDEXIS software is to be installed.

If the language version of the operating system is not available as an installation language, English will automatically be used as the installation language. This can be changed manually by clicking the desired language in the bar at the bottom of the start screen.

Sirona Reconstruction Server

The Sirona Reconstruction Server is delivered with an English operating system.

The following steps describe the installation after conversion to the applicable national language.

3.4 Installation selection

Selection

- Click on the "Sirona Reconstruction Server" button.
- 🖱 The Sirona Reconstruction Server installation dialog box opens.



Start

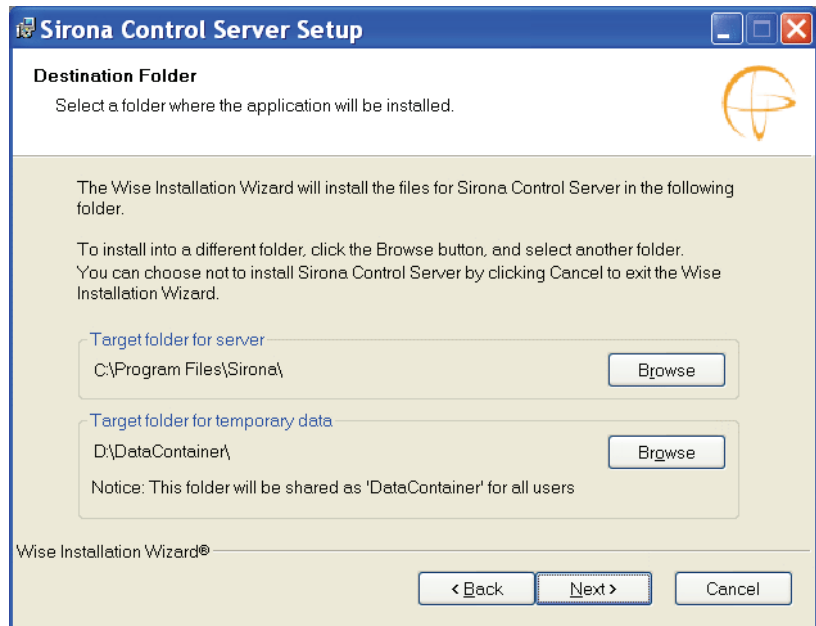
- Click the "Next" button.
- If the .Net Framework 3.5 is not yet installed, you will be prompted at this time to install it. To do this, follow the on-screen installation instructions.
If necessary, you will be prompted to restart the system after the Framework installation. After you have restarted the computer, restart the installation routine.
- The installation wizard for the Sirona Control Server opens.



3.5 Installation Wizard

3.5.1 Starting the installation

- Click the "Next" button.
- 🔗 A dialog box to define the installation directories opens.



3.5.2 Setting an installation directory for the Sirona Control Server

1. Select the target directory for the program path.

NOTICE

The target directories for the "Sirona Reconstruction Server" are set permanently by the system.

2. Select the target directory for temporary files.

⚠ CAUTION

Insufficient hard disk space

Don't install the temporary directory on the C. drive.

Sirona supplies the RCU with a sufficiently large D drive. Select this drive as the temporary directory.

3. Click the "Next" button.
- 🔗 A dialog box opens to configure the Sirona Control Server.

Sirona Control Server Setup

Installation Configuration
Set property values used for configuring the installed application.

Sirona Control Server configuration

Host: PSB-REK01
Port: 8080

SIDEXIS XG database

SQL Server: PCN20447\PDATA_SQLEXPRESS
Image location: D:\PDATA\

Wise Installation Wizard®

< Back Next > Cancel

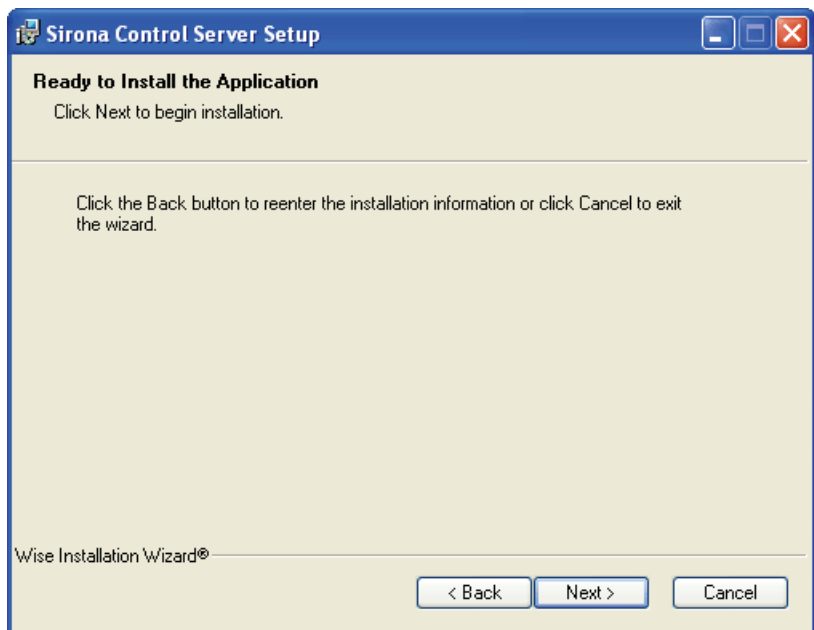
3.5.3 Configuration of the Sirona Control Server

1. Select an installation computer (Reco Server).
2. Assign a port number.

NOTICE

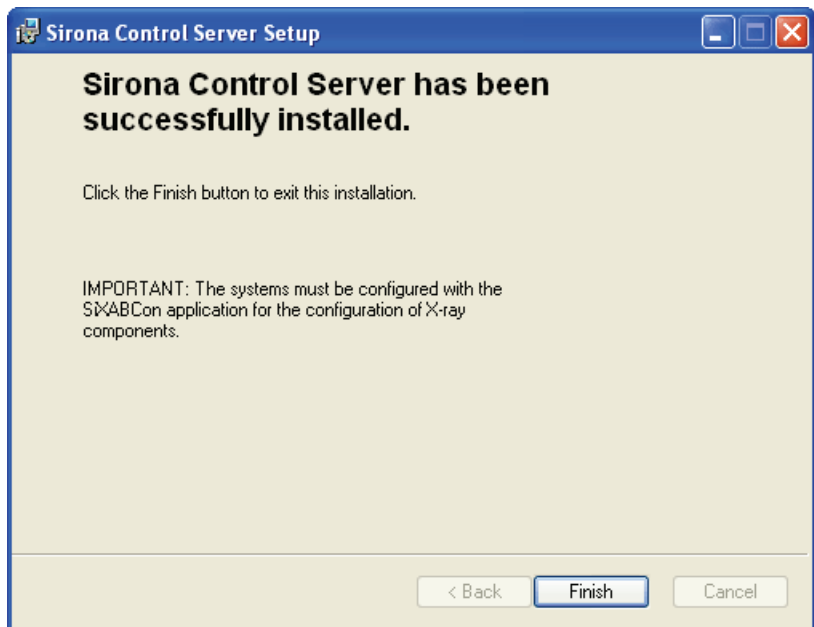
In most cases, the default port number can be used.

3. Check the target directories for the SQL server and the image archive.
 4. Click the "Next" button.
- 👉 A dialog box to start the installation opens.



3.5.4 Starting the installation

- Click the "Next" button.
- ↳ The installation begins.
- ↳ A dialog box to finish the installation opens.



3.5.5 Finishing the installation

- Click the "Finish" button.
- ↳ Following successful installation of the Sirona Control Server, the "Sirona Reconstruction Server" program is installed automatically.
- ↳ The installation program returns to the start page.

👉 The installation is complete.

4 GALILEOS

4.1 Installation of a visualization PC

4.1.1 Prerequisites

Prerequisites

- The Sirona Reconstruction Server must be fully installed and ready for use.

4.1.2 SIDEXIS XG client installation

Explanation

Prior to the actual installation, a SIDEXIS XG client has to be installed on the Sirona Reconstruction Server and the visualization PC.

Prerequisite

- A SIDEXIS network already exists and the SIDEXIS database server and SIDEXIS XG master station are installed (see SIDEXIS installation instructions).

Installation

The installation of the SIDEXIS XG client is described in the SIDEXIS installation instructions.

4.1.3 Starting the GALILEOS workstation CD

Important information

The following should be noted prior to installation:

- The login of multiple users is not permissible.
- The user who performs the installation must have administrator rights.
- Any other programs which may be running must be closed.

Starting the installation

The GALILEOS CD usually starts automatically after it is inserted in the drive. If this is not the case, you can start the setup routine manually by executing the Autorun.exe file in the root directory of the CD.



Installation language

The installation program checks the language version of the installed operating system and automatically switches to one of the possible installation languages. This does not necessarily have to be the language in which the SIDEXIS software is to be installed.

If the language version of the operating system is not available as an installation language, English will automatically be used as the installation language. This can be changed manually by clicking the desired language in the bar at the bottom of the start screen.

4.1.4 Starting the installation

Selection

1. Click the "GALILEOS workstation" button.
↳ The visualization PC installation dialog box opens.



Start

2. Select the target directory for the program path.

➤ Click the "Next" button.

↪ If the .Net Framework 3.5 is not yet installed, you will be prompted at this time to install it. To do this, follow the on-screen installation instructions.

If necessary, you will be prompted to restart the system after the Framework installation. After you have restarted the computer, restart the GALILEOS installation.

↪ The installation process for a visualization PC begins.

↪ After the successful installation, the installation program returns to the start page.

↪ The workstation installation is complete.

5 ORTHOPHOS XG 3D

5.1 Installation of a visualization PC

5.1.1 Prerequisites

Prerequisites

- The Sirona Reconstruction Server must be fully installed and ready for use.

5.1.2 SIDEXIS XG client installation

Explanation

Prior to the actual installation, a SIDEXIS XG client has to be installed on the Sirona Reconstruction Server and the visualization PC.

Prerequisite

- A SIDEXIS network already exists and the SIDEXIS database server and SIDEXIS XG master station are installed (see SIDEXIS installation instructions).

Installation

The installation of the SIDEXIS XG client is described in the SIDEXIS installation instructions.

5.1.3 Starting the ORTHOPHOS XG 3D workstation CD

Important information

The following should be noted prior to installation:

- The login of multiple users is not permissible.
- The user who performs the installation must have administrator rights.
- Any other programs which may be running must be closed.

Starting the installation

The workstation CD usually starts automatically after it is inserted in the drive. If this is not the case, you can start the setup routine manually by executing the Autorun.exe file in the root directory of the CD.



Installation language

The installation program checks the language version of the installed operating system and automatically switches to one of the possible installation languages. This does not necessarily have to be the language in which the SIDEXIS software is to be installed.

If the language version of the operating system is not available as an installation language, English will automatically be used as the installation language. This can be changed manually by clicking the desired language in the bar at the bottom of the start screen.

5.1.4 Starting the installation

Selection

- Click on the "XG3D Workstation" button.
 - ↳ The visualization PC installation dialog box opens.



Start

- Click the "Next" button.
- ✚ If the .Net Framework 3.5 is not yet installed, you will be prompted at this time to install it. To do this, follow the on-screen installation instructions.
If necessary, you will be prompted to restart the system after the Framework installation. After you have restarted the computer, restart the installation routine.
- ✚ The installation process for a visualization PC begins.
- ✚ After the successful installation, the installation program returns to the start page.
- ✚ The workstation installation is complete.

6 Installation and initial startup of the 3D X-ray unit

Explanation

Once the necessary software components have been installed, the 3D X-ray unit has to be registered via a visualization PC, using the *"Configuration of the X-ray components"* program.

Prerequisites

The Sirona Reconstruction Server (RCU) and the 3D X-ray unit are ready for operation.

Installation

The operation of the *"Configuration of the X-ray components"* program is described in the SIDEXIS installation instructions.

The use of the Boot service is recommended.

The 3D X-ray unit is represented by the following logo in the *"Configuration of the X-ray components"* program:



Factory setting

The IP address of the 3D X-ray unit is: *192.168.15.240*.

7 Licensing

7.1 Factory setting

Licenses

The following (limited) licenses are included in the dongle, which is shipped with the 3D X-ray system:

- 1 x reconstruction software (Reco server)
- 2x GALAXIS full version (3D visualization)
- 1x GALILEOS Implant (3D implant design)

NOTICE

No license without dongle

The dongle must be inserted into a USB port of the RCU (Reconstruction Control Unit) from the first startup.

Dongle

The dongle is a small computer, which resembles a USB flash drive.

It is connected to the RCU via USB and represents the collective location of all licenses.

These licenses are consumed with use (floating license).

Limitations

The GALAXIS full version, GALILEOS Implant, and the use of the Reco Server are limited to 200 start-ups.

The sectional magnification may be used 20 times.

Voiding limitations

Once the device is adjusted and set up, the technician will fill out a handover report, which must be completed with the data of the end customer and returned to the Sirona Customer Service Center (KSC).

The Customer Service Center will create an individual license.

This license is only available as a data file and is referred to as the Initial License File.

This license file will be sent to the end customer by E-Mail or on a CD.

7.2 License management

The license server installed on the Sirona Reconstruction Server (RCU) is responsible for license management.

The license server can be controlled from a visualization PC, using the Sirona Control Admin plugin.

7.2.1 Installing the license file

Explanation

The license file contains all information about the license.

- This information has to be transferred to the USB license dongle.
- The USB license dongle is plugged into the Sirona Reconstruction Server (RCU) and must be in place during the transfer.

What is a visualization PC?

- This document repeatedly uses the term visualization PC. The visualization PC is a SIDEXIS workstation (client installation), which was supplemented for creating and editing 3D exposures.
- The *"Sirona Control Admin"* application transfers the license data to the USB license dongle.
- The *"Sirona Control Admin"* application is a functional expansion of the SIDEXIS XG software and is part of the visualization PC.
- SIDEXIS SG transfers the license data to the remote RCU via the network and imports it in the USB license dongle.

Transfer tool

7.2.1.1 Storing the license file

Explanation

The license file must be accessible for transfer from the selected visualization PC.

NOTICE

Recognition of the license file

The license file has the designation
"ActivationCodes-Serial number.xml."

Serial number = individual Sirona code.

Delivery via CD-ROM

- Insert the CD-ROM into the CD-ROM drive of the selected visualization PC.

Delivery via E-Mail

If you received your license file as an E-Mail attachment, this attachment must be copied.

- If the E-Mail is in the required visualization PC, copy the license file to the Desktop.
- If the E-Mail is **not** in the required visualization PC, copy the license file to a suitable transfer medium (USB stick, CD-ROM etc).
- Then insert this medium in the visualization PC.

7.2.1.2 Installation

Installation

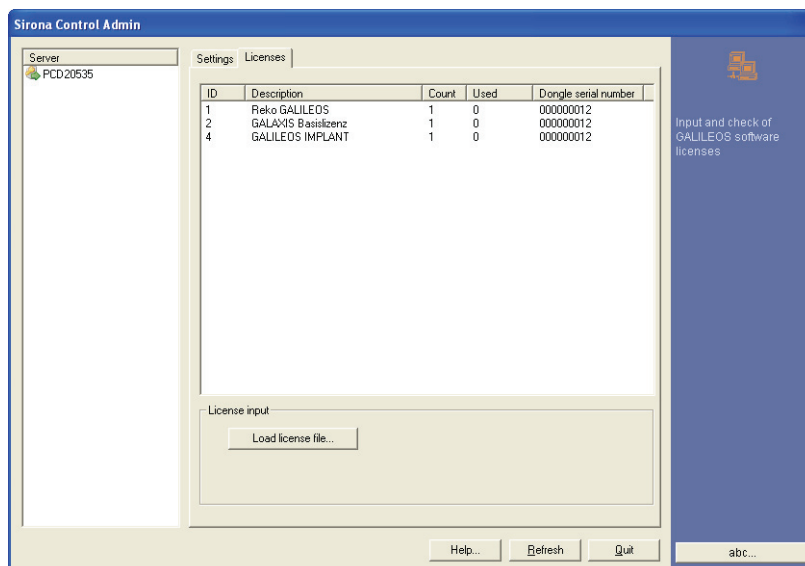
- ✓ The USB license dongle is plugged into the RCU.
- ✓ The RCU is ready to operate.
- 1. Use *"start" / "programs" / "SIDEXIS" / "SIDEXIS Manager"* to open the application *"Sirona Control Admin License"*.
- 2. Open the *"Licenses"* tab.
- 3. Click the *"Load license file..."* button.
- 🔗 An Open File dialog box opens.

Finding the license file

- Navigate to the corresponding license file.
- **License file on CD-ROM or other transfer medium:** Change to the drive letter of the CD-ROM drive or the transfer medium.
- **License file on Desktop:** Change to the Desktop.

Loading the license file

1. Select the license file.
 2. Click the *"Open"* button.
- The transferred licenses are shown in the license list of the *"Licenses"* tab.



After the installation

- Close the *"Sirona Control Admin"* application.

License file via CD-ROM

- Remove the CD-ROM from the CD-ROM drive of the selected visualization PC.

7.2.2 Purchasing new licenses

A new license file has to be generated to add licenses to the system.

When the KSC receives an order, the customer profile is opened with the existing licenses.

The newly purchased licenses are added to the customer profile and a new license file is generated.

This new license file is sent to the customer by mail on a CD-ROM (license file may also be sent as an E-Mail attachment ahead of time).

The customer then has to install this new license file. [→ 22]

We reserve the right to make any alterations which may be required due to technical improvements.

© Sirona Dental Systems GmbH 2011
D 3437.031.02.07.02 05.2011

Sprache: englisch
Ä.-Nr.: 114 222

Printed in Germany

Sirona Dental Systems GmbH

in the USA:

Fabrikstraße 31
64625 Bensheim
Germany
www.sirona.com

Sirona Dental Systems LLC
4835 Sirona Drive, Suite 100
Charlotte, NC 28273
USA

Order No

61 42 389 D 3437