

X-ray Acceptance Check with DBSWIN


Legal requirements	12-1
Processing	12-1
Stored acceptance and consistency checks.....	12-4
Partial- or overlapping Acceptance Check	12-4
Printing the results	12-5
Print preview	12-5
Print options	12-5


X-ray Acceptance Check with DBSWIN

Legal requirements

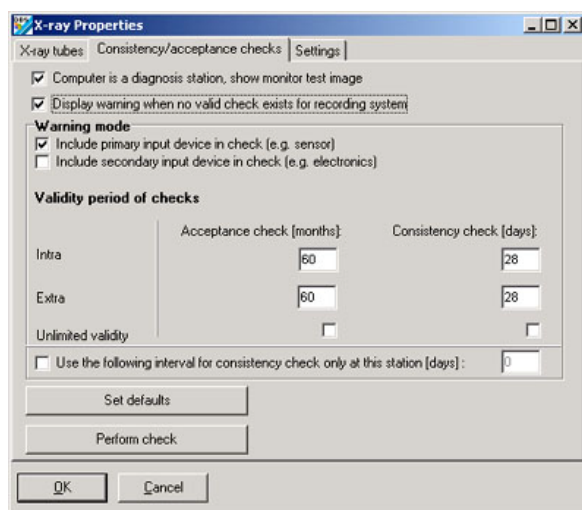
See Legal Requirements

Processing

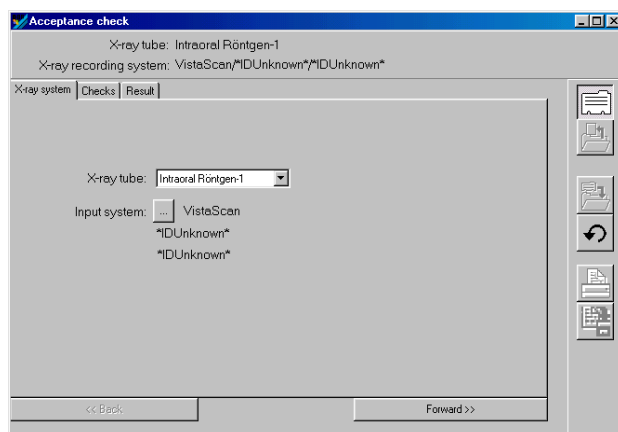
 The CCD sensor or storage phosphor foil should always be inserted in the test body all the way to the stop! If necessary fix it with soft material (cotton wool).


 An acceptance check can only be done in the configuration module (Menu/configuration/module/Xray)!

In order to carry out an Acceptance Test the particular X-ray station/appliance must be registered. If this is the first time, the optimal X-ray parameters for this X-ray tube must be entered.




Proceed by pressing the pushbutton  to go further on.



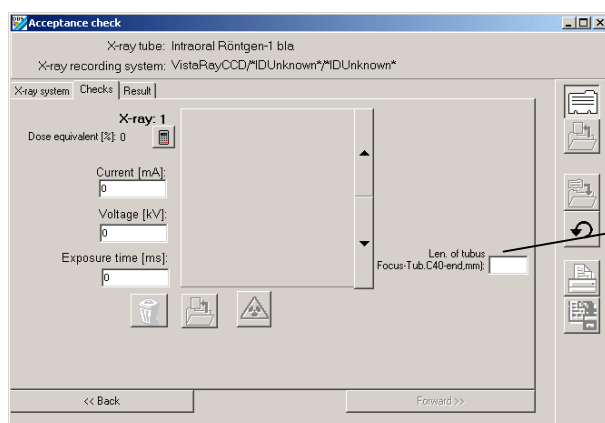
To perform a new Acceptance check please press the pushbutton . Select the appropriate check type in the dropdownlist. Then press the pushbutton at the bottom to go to the check section.

Please note: for intraoral X-ray appliances it is imperative to enter the length of the X-ray tube in millimeters! This value is used for the calculation of the magnification factor for acceptance tests with the digital test body.

Press the pushbutton  to take the necessary images.

The parameters for the X-ray image can be entered any time. A take can be repeated as often as desired by repeating the same test step. The program will ask whether an existing X-ray is to be overwritten. If a test step requires several takes (currently 4 images with 90-degree rotations of the X-ray tube to determine the circular useful radiation field area), the images are displayed with the corresponding numbers.





The X-rays can be selected with the up and down arrow keys on the right. Click on an image to open it and display an enlarged version next to the box.




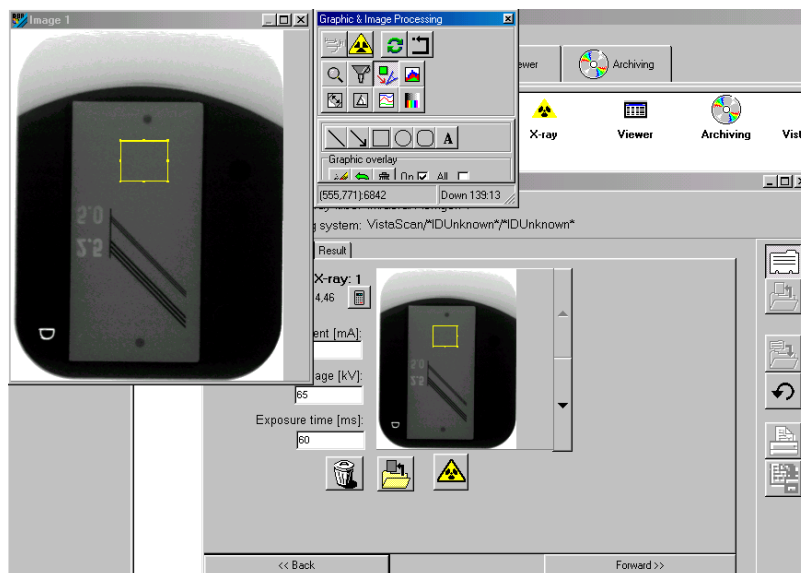
Intraoral X-ray tube length must be set for Intraoral Xray devices!

This scaleable image can be temporarily edited and examined with the image processing functions (measuring aid, contrast/brightness, etc.).

The image processing functions can be activated by double clicking in the image area.

The Dose Equivalent Value is shown in the area covered by the yellow square field. This area should lie in a homogenous medium-grey area of the sensor image. If this is not the case, then this area must be repositioned. Open the image in the window (click inside the image area itself or on the symbol ). In this image window, select the area covered by the square by clicking the yellow frame. The complete framed area can be moved when the cursor symbol changes from  to the symbol . A new click inside the image window closes the move operation. After repositioning, the symbol  must now be clicked, so that the Dose Equivalent Value can now be recalculated.

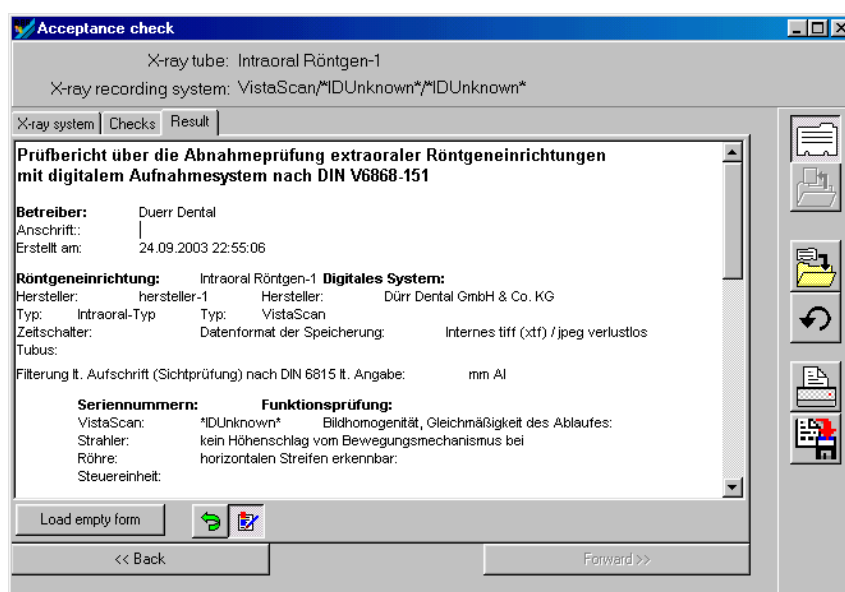
 This yellow square area calculated in the first imaging of the Acceptance Test will be used for every subsequent Consistency Check of the X-ray appliances as the basis for the calculation of the Dose Equivalent Value and will always be displayed!



When all the necessary test images have been taken, the results can be entered in the acceptance form.

The existing system parameters are automatically transferred to the form. All other information must be entered in the corresponding fields by the user. It is also possible to enter additional information in the form. Note, however, that everything you enter must fit on one page. You can check this by displaying the page in the print preview mode to see how much of it is used up. The division of the page into image and text areas can be individually adjusted. Entry of test results in the *acceptance check form* (this form can be modified: it is located in the file DBSWIN\bin\ares.rtf)

Entering test results in the Acceptance Test form



Acceptance check

X-ray tube: Intraoral Röntgen-1
X-ray recording system: VistaScan/*IDUnknown*/IDUnknown*

X-ray system | Checks | Result

Prüfbericht über die Abnahmeprüfung extraoraler Röntgeneinrichtungen mit digitalem Aufnahmesystem nach DIN V6868-151

Betreiber: Dürr Dental
Anschrift: |
Erstellt am: 24.09.2003 22:55:06

Röntgeneinrichtung: Intraoral Röntgen-1 **Digitales System:**
Hersteller: hersteller-1 **Hersteller:** Dürr Dental GmbH & Co. KG
Typ: Intraoral-Typ **Typ:** VistaScan
Zeitschalter: **Datenformat der Speicherung:** Internes tiff (xtf) / jpeg verlustlos
Strahl: |
Filterung lt. Aufschrift (Sichtprüfung) nach DIN 6815 lt. Angabe: mm Al

Seriennummern: **Funktionsprüfung:**
VistaScan: *IDUnknown* Bildhomogenität, Gleichmäßigkeit des Ablaufes:
Strahler: kein Höhengschlag vom Bewegungsmechanismus bei
Röhre: horizontalen Streifen erkennbar:
Steuereinheit: |

Load empty form

<< Back Forward >>

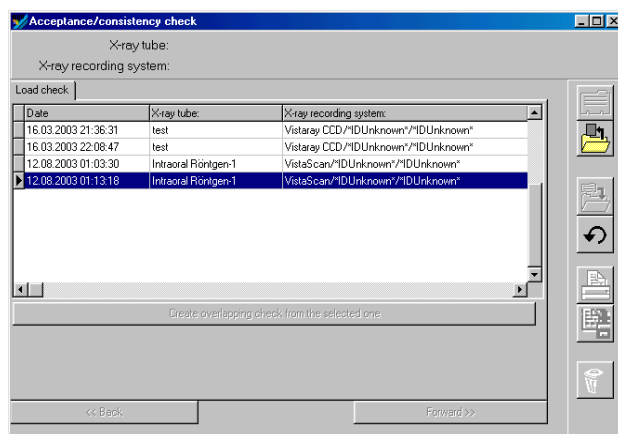
The document can be saved when the user has made at least one entry.



The test results can no longer be modified once the document has been saved.

Stored acceptance and consistency checks

In the *Type* column, acceptance checks are identified by an *A* and consistency checks by a *C*.



DoubleClick on the desired row (check) or on button  to load the data.

The list can be sorted by dates by clicking on the *Date* column heading.

Partial- or overlapping Acceptance Check

When changing any of the components that may influence the quality of the X-ray image (e.g. VistaScan, Monitor, X-ray appliance, phosphor Storage medium type etc.) then a partial or overlapping check must be carried out.

The last Acceptance check is selected from the list and the button *overlapping check* pressed. All the relevant data will be called up from the Acceptance Test selected and new image exposures will be taken.

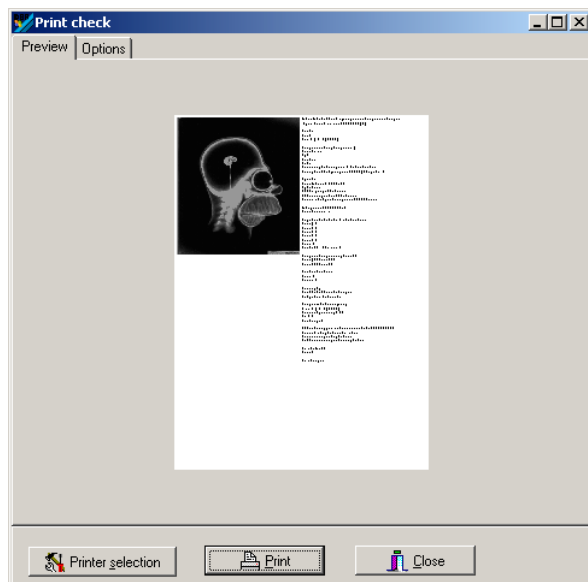
In order to carry out an *overlapping check* the following steps must be carried out:

- Select the last Acceptance Check for that X-ray unit and load the results.
- Press the pushbutton *Create overlapping from the selected one*.
- It is now possible to use the earlier information, which will be supplemented, and new images will be produced. Steps as for Acceptance Check!

Printing the results

Print preview

Here you can check whether the text and test image fit on one page.



Print options

The position and graphics/text area proportions can be adjusted in the layout section.

The paper orientation and type size can be adjusted in the format area.

